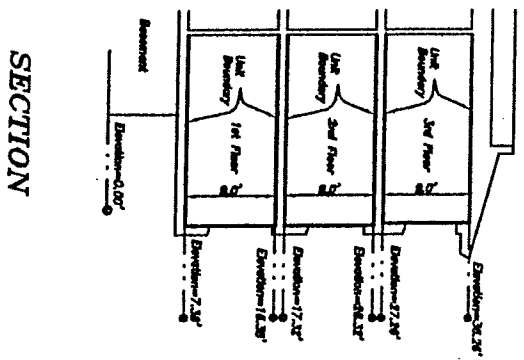
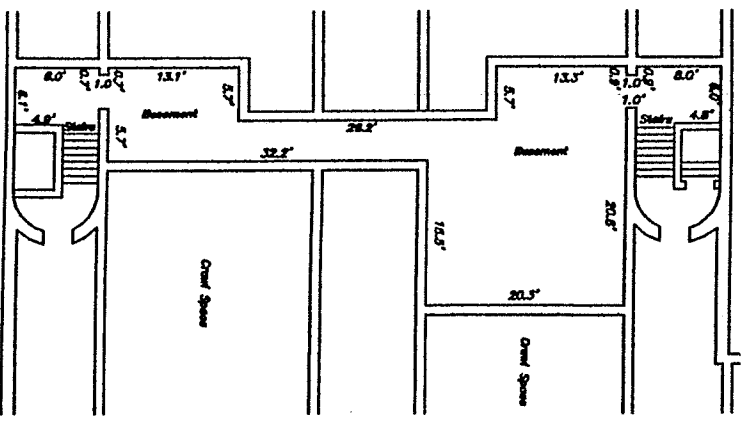
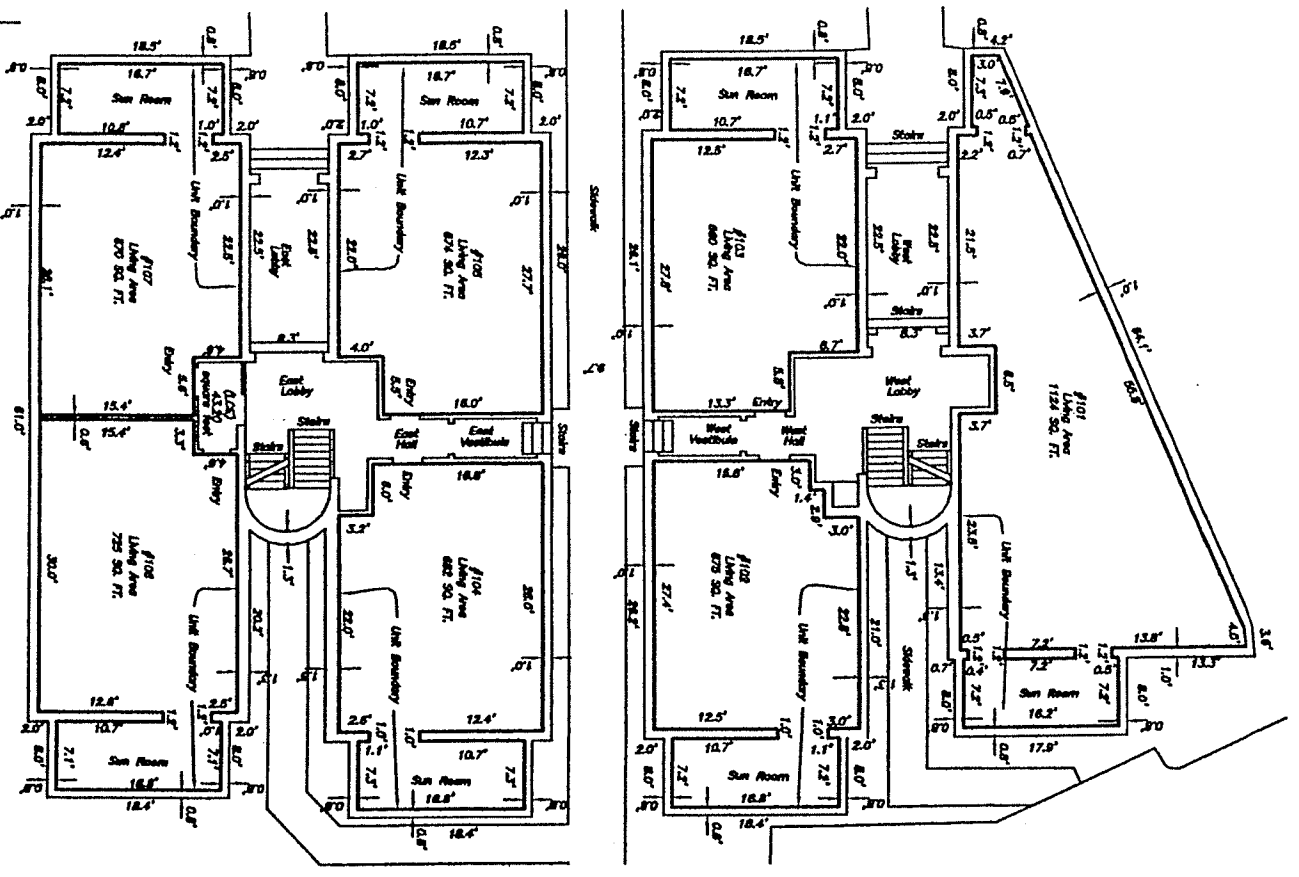
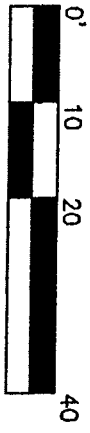


FRANCES CARLTON CONDOMINIUM

South 1/2 of Section 19, Township 30, Range
18 East, Somerset County, Florida.

CONDOMINIUM BOOK _____ PAGE _____

SHEET 2 OF 3



1ST FLOOR

BASEMENT

SECTION

LEGEND:
(LCS) - LIMITED COMMON ELEMENT

BRITTS SURVEYING, INC.
LAND SURVEYORS AND MAPPERS

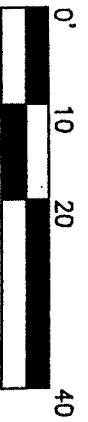
BRITTS SURVEYING, INC.
LAND SURVEYORS AND MAPPERS
OFFICE: 1800 W. US HWY 90, SUITE 200, TAMPA, FL 33606
PHONE: (813) 973-8888
FAX: (813) 973-8889
WWW.BRITTSURVEYING.COM

FRANCES CARLTON CONDOMINIUM

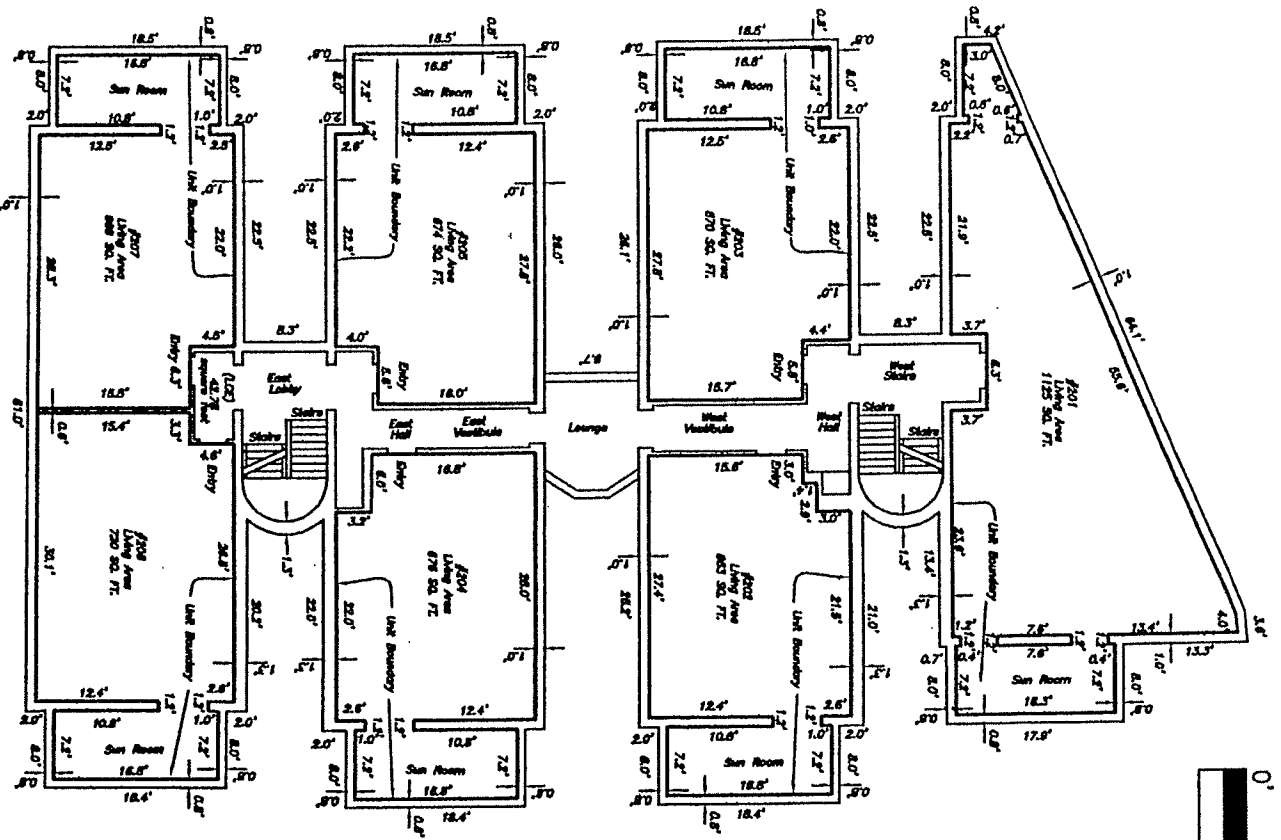
South 1/2 of Section 19, Township 30, Range 18 East, Sarasota County, Florida.

CONDOMINIUM BOOK PAGE

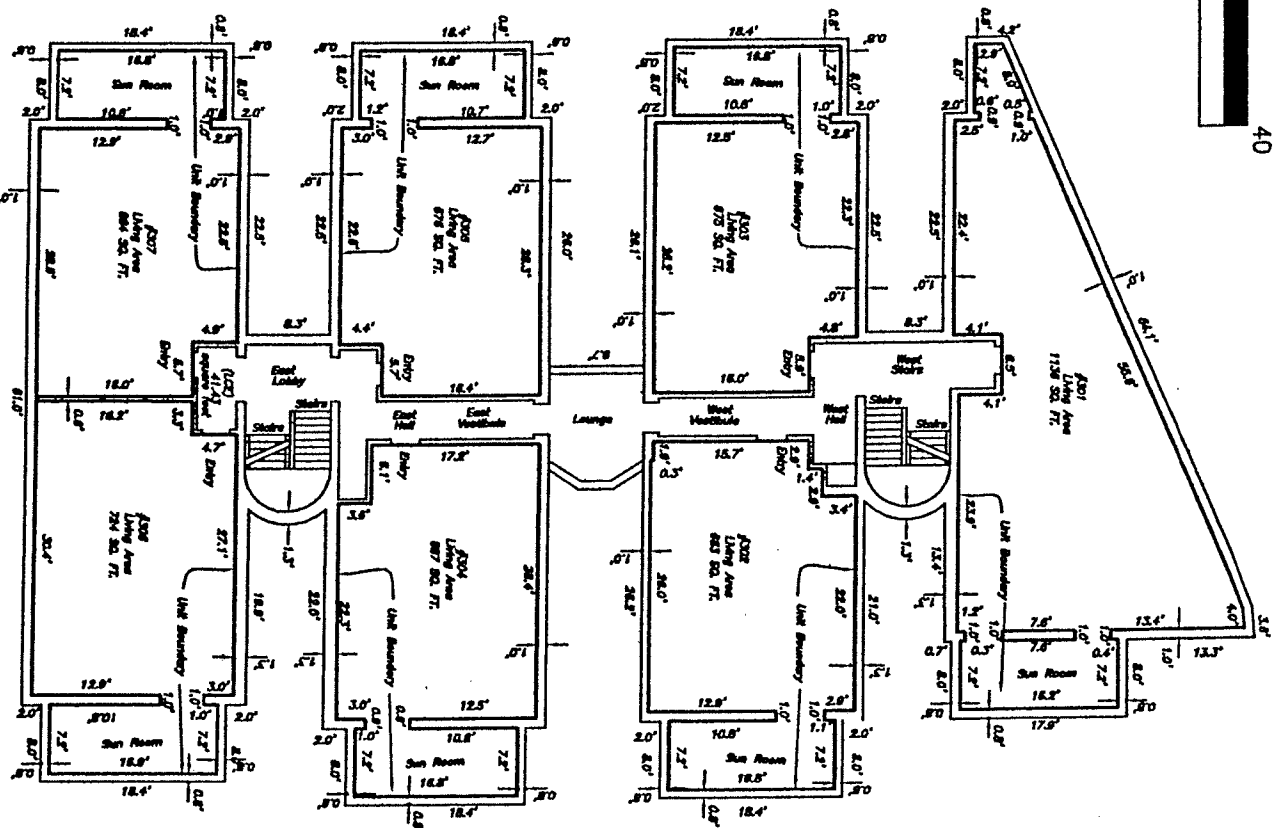
SHEET 3 OF 3



SCALE: 1" = 20'



2ND FLOOR



3RD FLOOR

LEGEND:
(LCS) - LIMITED COMMON ELEMENT

REVISION: 1-28-01 ADDING AREA
REVISION: 1-28-01 ADDING AREA TO UNIT



BRITT SURVEYING, INC.
LAND SURVEYORS AND MAPPERS
CORPORATE OFFICE: 1100 N. W. 11th St.
VENICE, FLORIDA 33596
PHONE: (251) 337-2444
FAX: (251) 337-2444