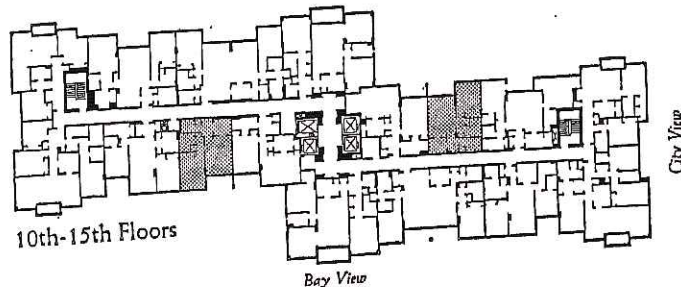
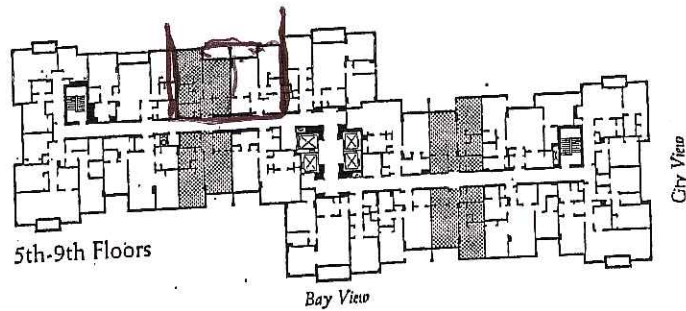


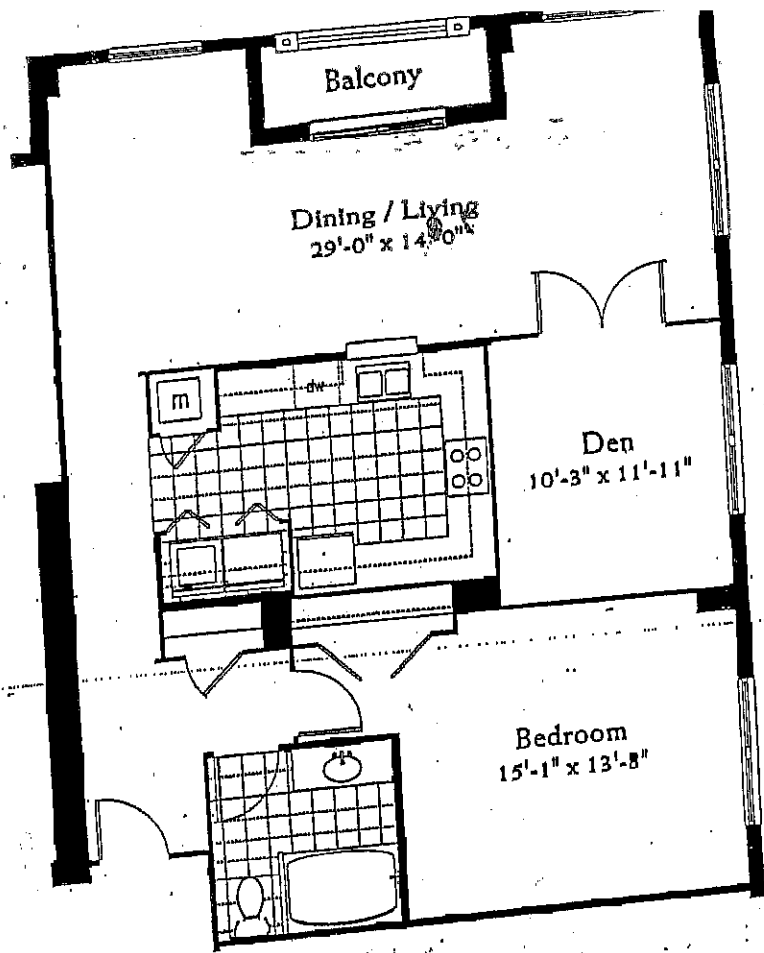
Shown: A-1C 705 approx. A/C sq. ft.

# RAPHAEL SERIES

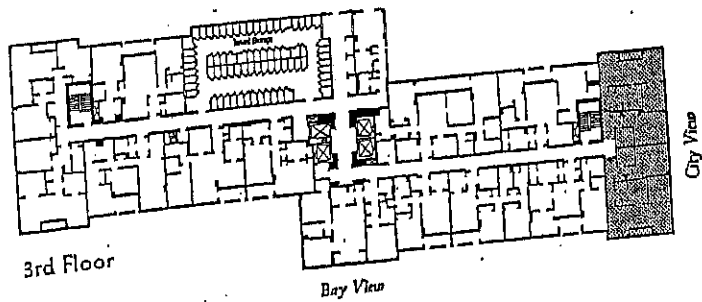
1 BEDROOM/1 BATH  
695 SQ. FT. TO 1,020 SQ. FT.



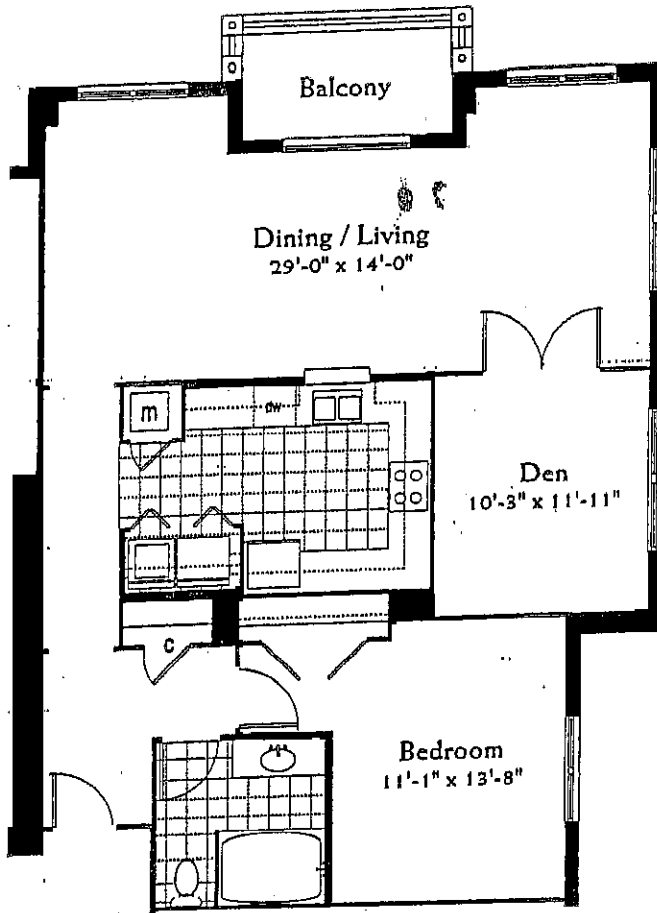
*Oral representations cannot be relied upon as correctly stating representations of the developer. For correct representations, make reference to this advertisement and to the documents required by section 718.503, Florida Statutes, to be furnished by a developer to a buyer or lessee.*



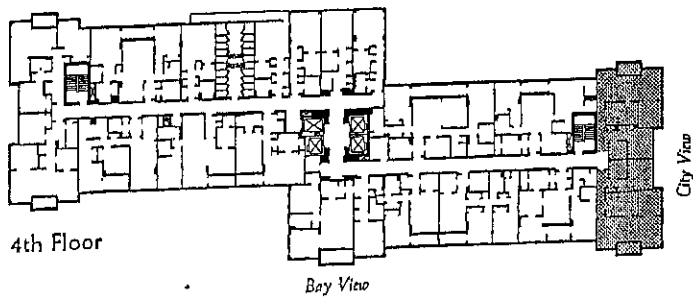
UNIT C-3



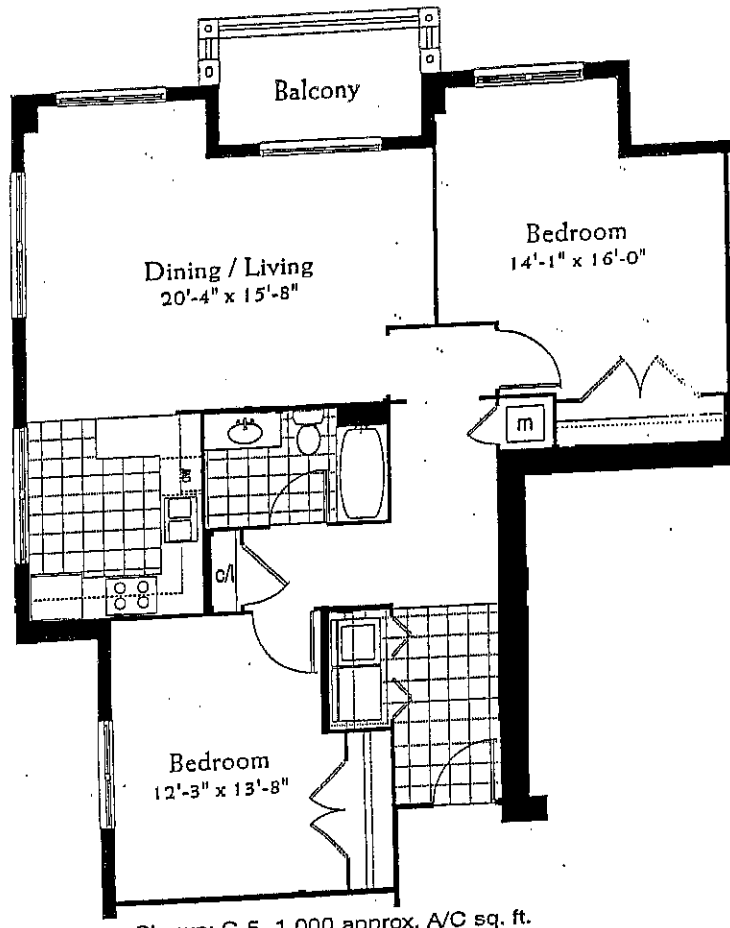
Oral representations cannot be relied upon as correctly stating representations of the developer. For correct representations, make reference to this advertisement and to the documents required by section 718.203, Florida Statutes, to be furnished by a developer to a buyer or lessee.



# UNIT C-4



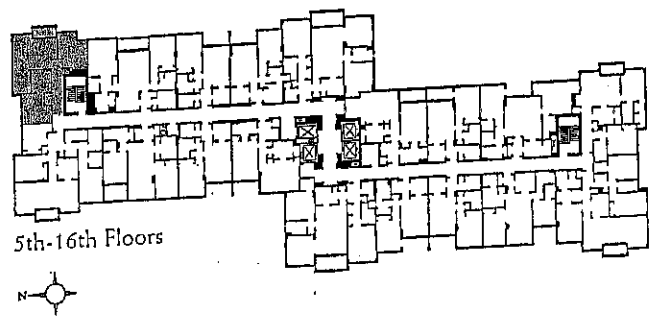
*Oral representations cannot be relied upon as correctly stating representations of the developer. For correct representations, make reference to this advertisement and to the documents required by section 718.503, Florida Statutes, to be furnished by a developer to a buyer or lessee.*



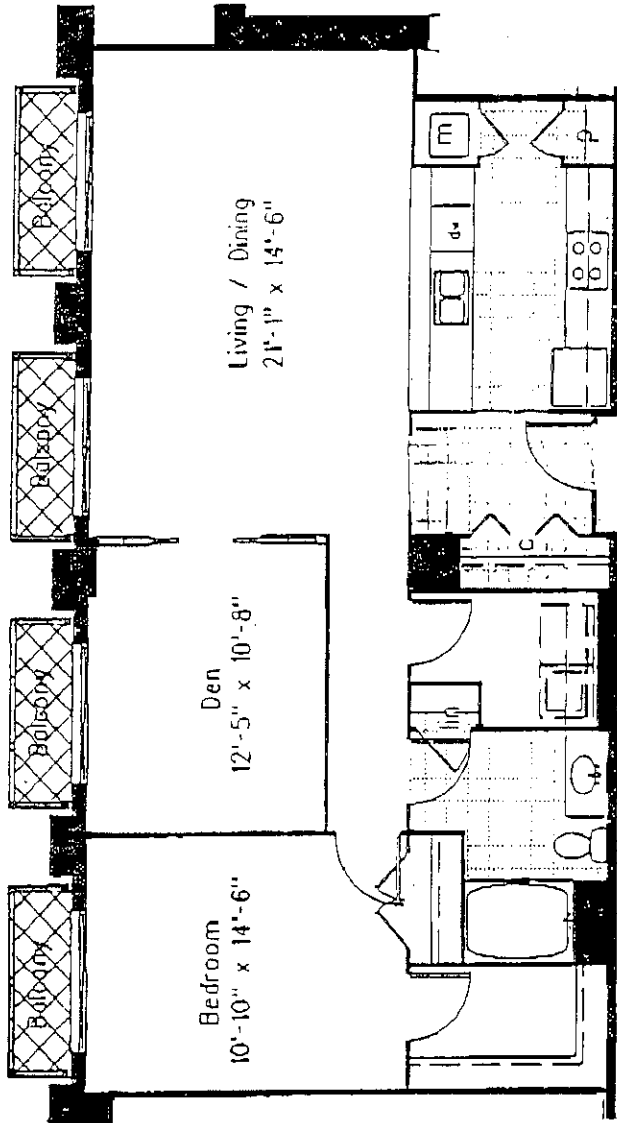
Shown: C-5 1,000 approx. A/C sq. ft.

# REMBRANDT SERIES

2 BEDROOM/1 BATH  
 990 SQ. FT. TO 1,030 SQ. FT.



*Oral representations cannot be relied upon as correctly stating representations of the developer. For correct representations, make reference to this advertisement and to the documents required by section 718.503, Florida Statutes, to be furnished by a developer to a buyer or lessee.*



Limited Common Elements

All improvements shown hereon are Common Elements except for the Units and the Limited Common Elements. Storage spaces and certain parking spaces to be designated by the developer as provided in the Declaration are Limited Common Elements. All improvements shown are proposed. Dimensions shown are proposed only and the actual dimensions may vary during construction.

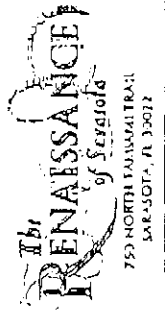


U202 Shown

Unit C-6



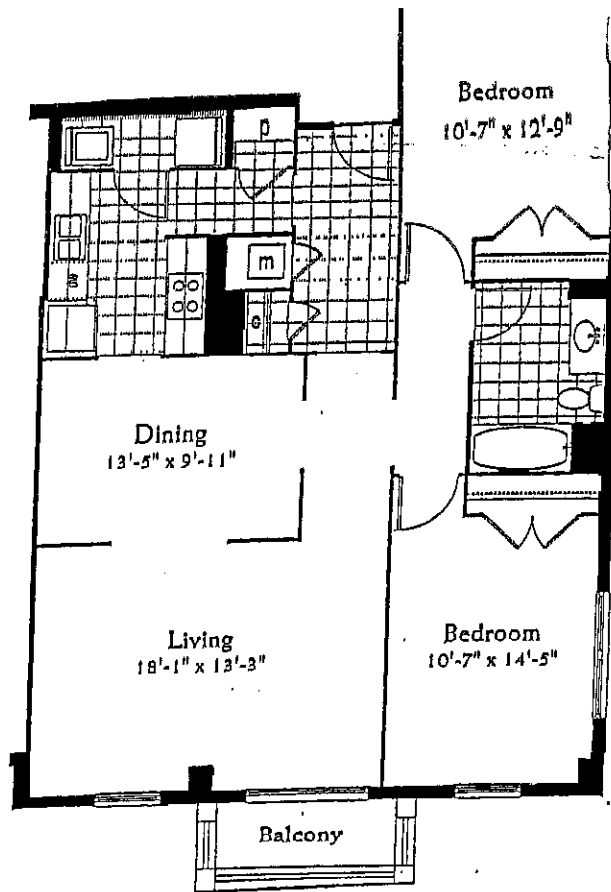
Sheet



OWNER:  
The Suncoast Real Estate, LP  
10000 Suncoast Blvd  
Sarasota, FL 34237

ARCHITECT:  
C. Robert Gandy & Associates  
1111 Bayshore Blvd.  
Sarasota, FL 34236  
PH: 941.552.2211

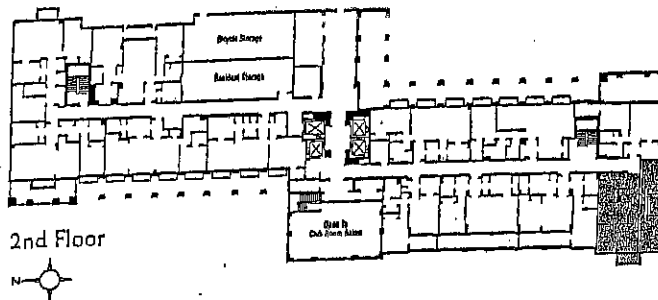




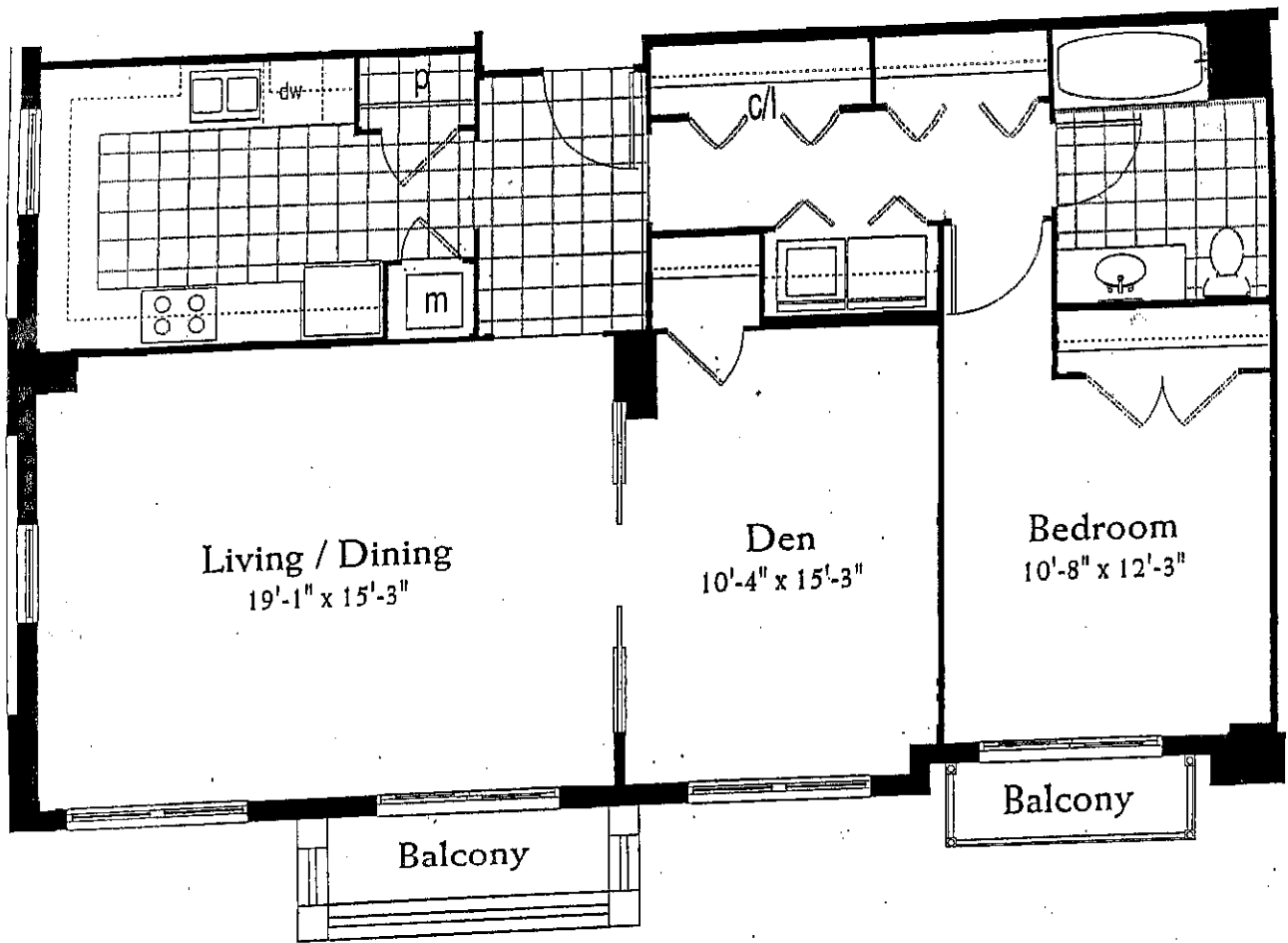
Shown: C-7 1,110 approx. A/C sq. ft.

# REMBRANDT SERIES

2 BEDROOM/1 BATH  
 990 SQ. FT. TO 1,030 SQ. FT.



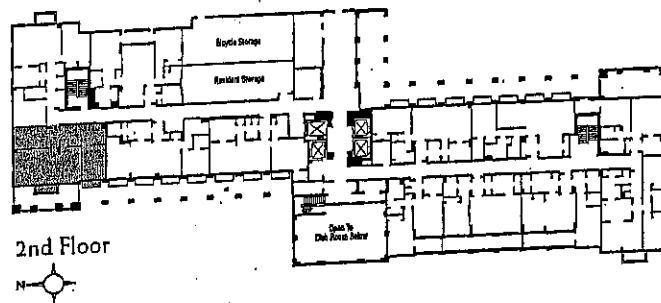
*Oral representations cannot be relied upon as correctly stating representations of the developer. For correct representations, make reference to this advertisement and to the documents required by section 718.503, Florida Statutes, to be furnished by a developer to a buyer or lessee.*



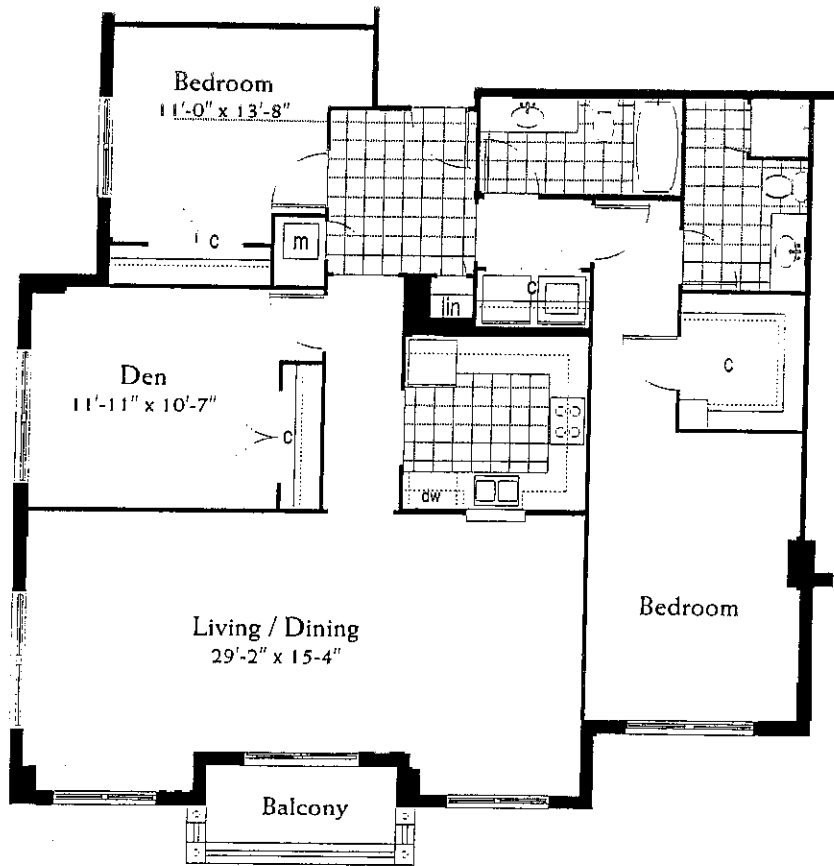
Shown: C-10 960 approx. A/C sq. ft.

# BOTTICELLI SERIES

1 BEDROOM/1 BATH/DEN  
 950 SQ. FT. TO 1,115 SQ. FT.



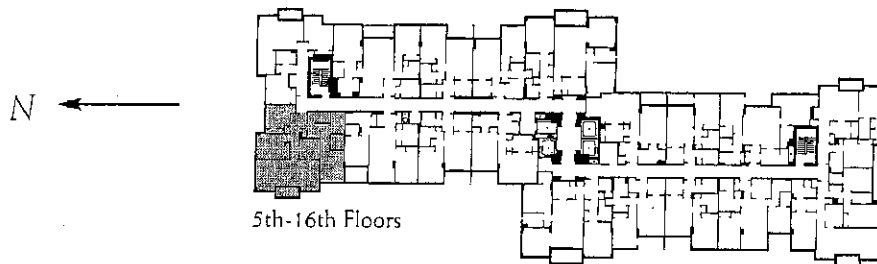
*Oral representations cannot be relied upon as correctly stating representations of the developer. For correct representations, make reference to this advertisement and to the documents required by section 718.503, Florida Statutes, to be furnished by a developer to a buyer or lessee.*



Shown: G-1 1,405 approx. A/C sq. ft.

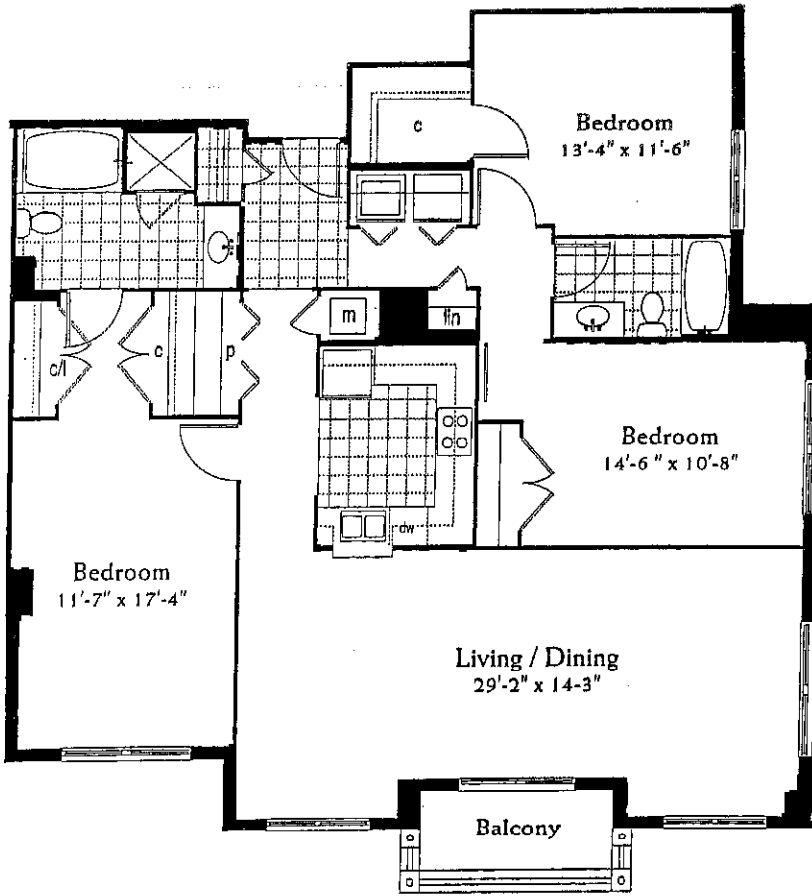
# BELLINI SERIES

2 BEDROOM/2 BATH/PLUS DEN  
1,355 SQ. FT. TO 1,470 SQ. FT.



*Oral representations cannot be relied upon as correctly stating representations of the developer. For correct representations, make reference to this advertisement and to the documents required by section 718.503, Florida Statutes, to be furnished by a developer to a buyer or lessee.*

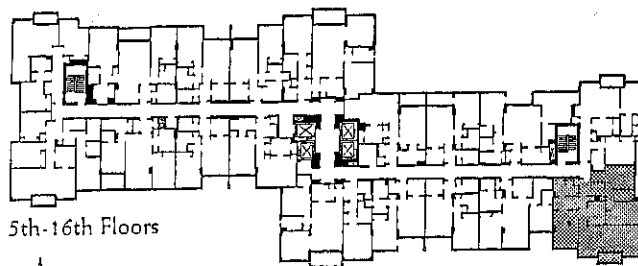




Shown: H-1 1,460 approx. A/C sq. ft.

# DA VINCI SERIES

3 BEDROOM/2 BATH  
1,460 SQ. FT.



5th-16th Floors



*Oral representations cannot be relied upon as correctly stating representations of the developer. For correct representations, make reference to this advertisement and to the documents required by section 718.503, Florida Statutes, to be furnished by a developer to a buyer or lessee.*