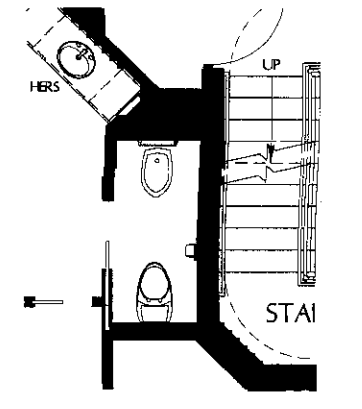


TRANSITION AT LEVELS 4, 7, 10

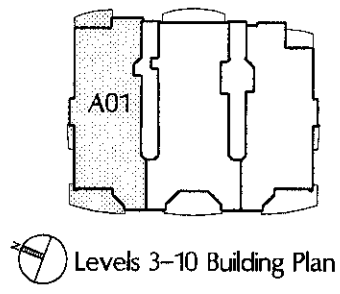


BIDET OPTION/MASTER BATH

RESIDENCE A 01

LEVELS 3 - 10
 3 BEDROOMS, GRAND SALON, DEN, 3 1/2 BATHROOMS
 (SEE 3RD LEVEL PLAN FOR EXPANDED TERRACE)

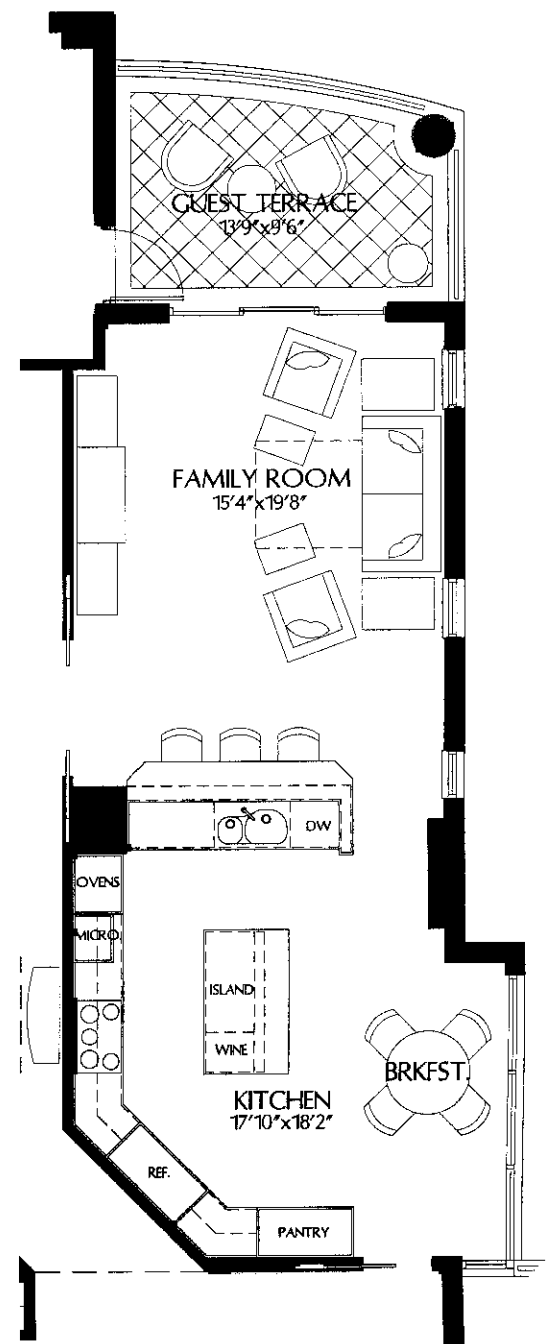
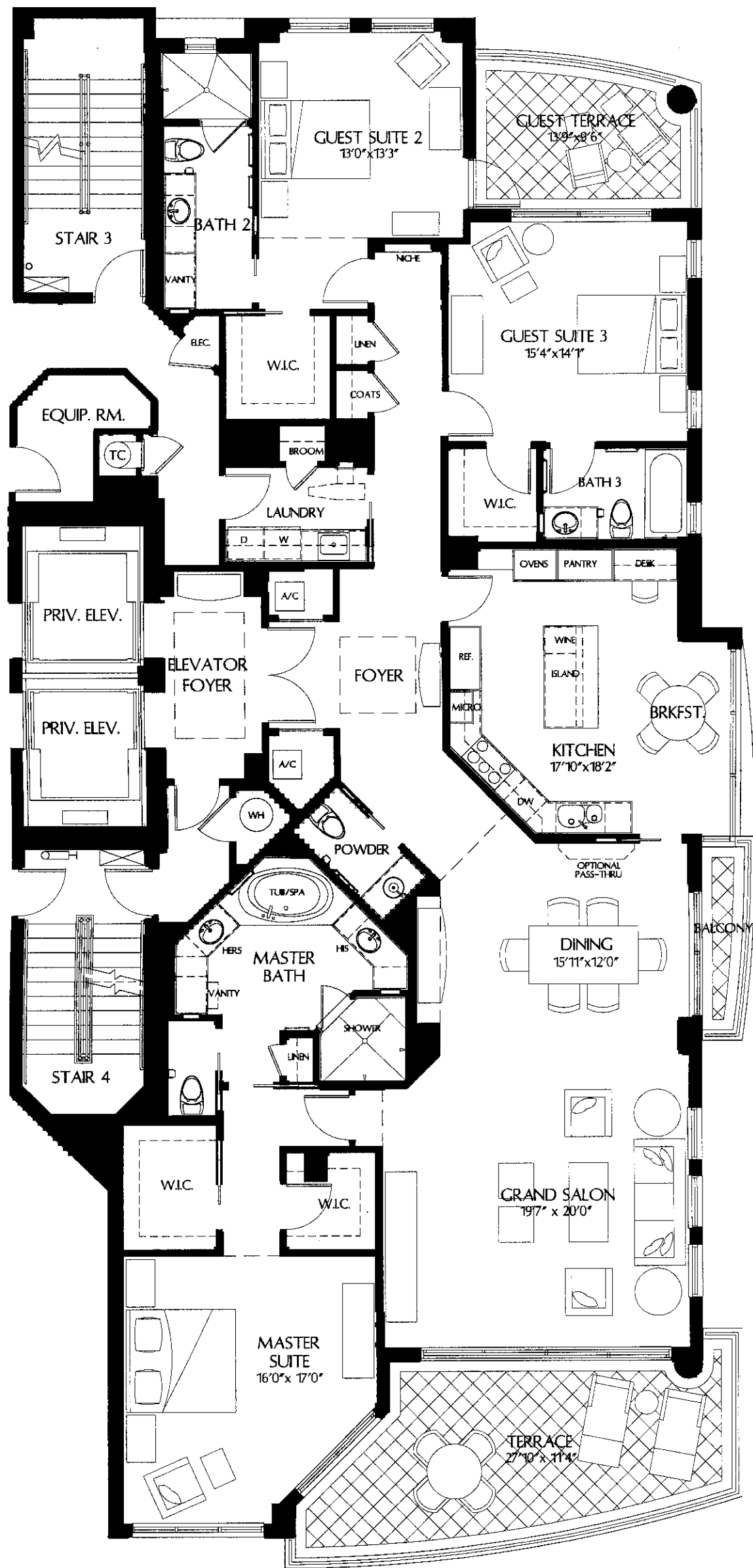
RESIDENCE DATA:	
CONDITIONED AREA	3,172 SF
TERRACE AREA	493 SF
TOTAL RESIDENCE AREA	<u>3,665 SF</u>



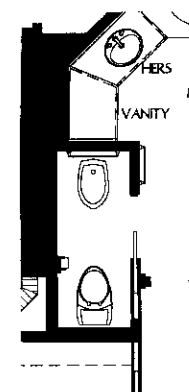
THE SAVOY
 ON PALM

All sizes, dimensions, specifications and features shown are subject to change in accordance with the agreement for sale. Materials and features used in any model may differ from those to be used in the condominium building and other units. Units are being sold unfurnished. Any depiction of furniture, furnishing, etc. shown is solely for visual effect, and such items are not being provided by the developer. Renderings and illustrations are artists' conceptions only and may vary as final designs are completed and construction progresses. Oral representations cannot be relied upon as correctly stating representations of the developer. For correct representations, make reference to this brochure and to the documents required by section 718.503, Florida statutes, to be furnished by a developer to a buyer or lessee.

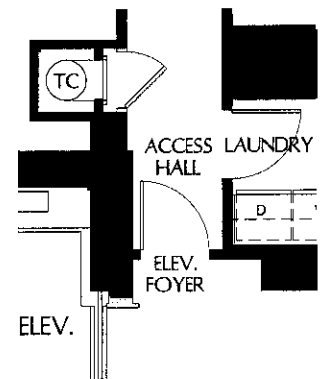




FAMILY ROOM / KITCHEN OPTION PLAN



BIDET OPTION MASTER BATH

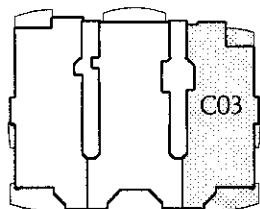


ELEV. FOYER CONDITION AT LEVELS 4, 7, 10

RESIDENCE C 03

LEVELS 4 - 10
3 BEDROOMS, GRAND SALON, 3 1/2 BATHROOMS

RESIDENCE DATA:
CONDITIONED AREA 2,975 SF
TERRACE AREA 475 SF
TOTAL RESIDENCE AREA 3,450 SF

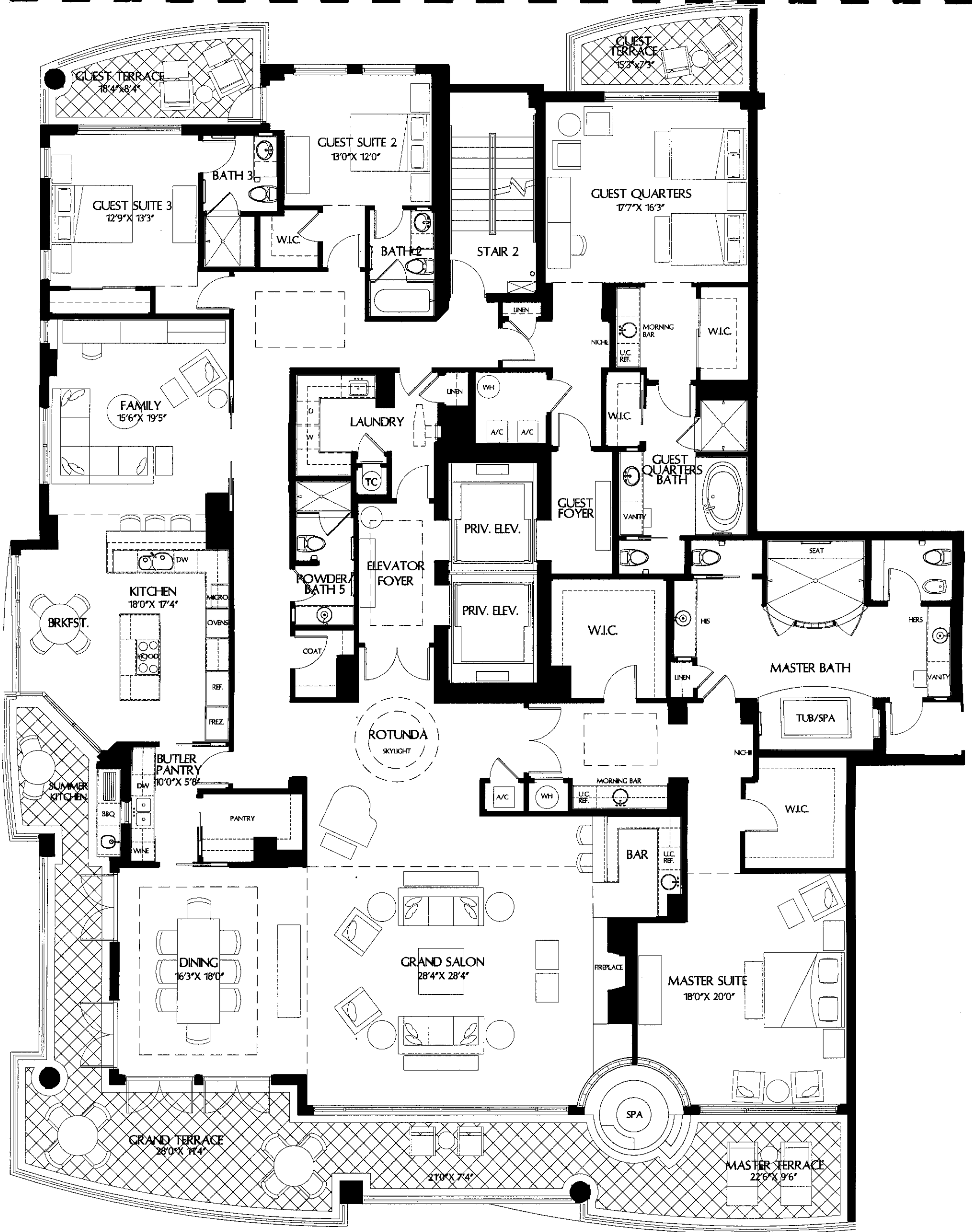


Levels 4-10 Building Plan

THE SAVOY
ON PALM

All sizes, dimensions, specifications and features shown are subject to change in accordance with the agreement for sale. Materials and features used in any model may differ from those to be used in the condominium building and other units. Units are being sold unfurnished. Any depiction of furniture, furnishing, etc. shown is solely for visual effect, and such items are not being provided by the developer. Renderings and illustrations are artists' conceptions only and may vary as final designs are completed and construction progresses. Oral representations cannot be relied upon as correctly stating representations of the developer. For correct representations, make reference to this brochure and to the documents required by section 718.503, Florida statutes, to be furnished by a developer to a buyer or lessee.

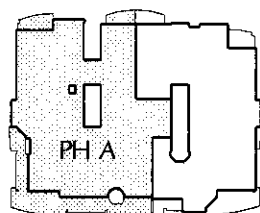




PENTHOUSE A

LEVEL 11
4 BEDROOMS, GRAND SALON, 5 BATHROOMS

RESIDENCE DATA:
 CONDITIONED AREA 5,708 SF
 TERRACE AREA 1,023 SF
 TOTAL LIVING AREA 6,731 SF

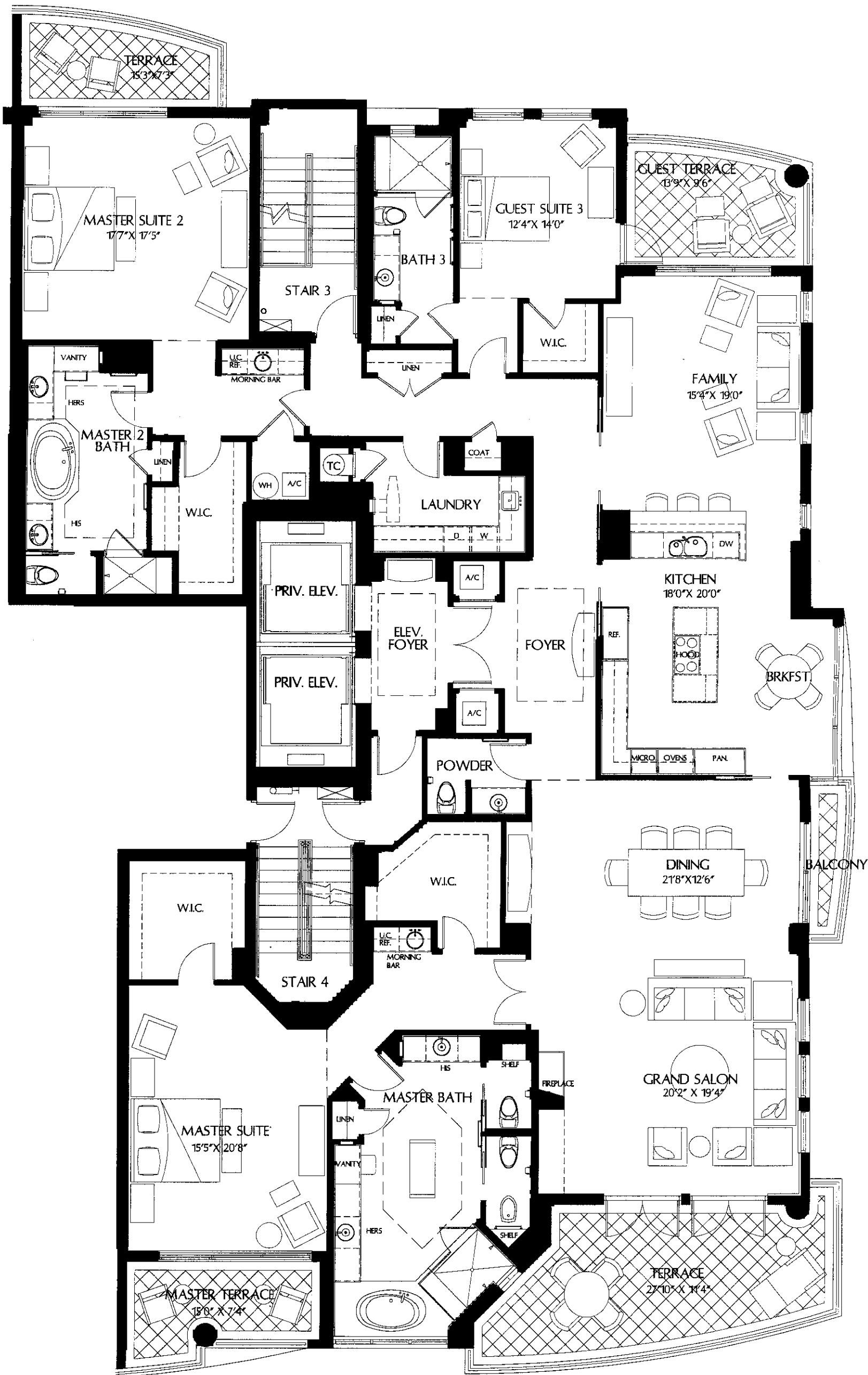


Level 11 Building Plan

THE
SAVOY
 ON PALM

All sizes, dimensions, specifications and features shown are subject to change in accordance with the agreement for sale. Materials and features used in any model may differ from those to be used in the condominium building and other units. Units are being sold unfurnished. Any depiction of furniture, furnishing, etc. shown is solely for visual effect, and such items are not being provided by the developer. Renderings and illustrations are artists' conceptions only and may vary as final designs are completed and construction progresses. Oral representations cannot be relied upon as correctly stating representations of the developer. For correct representations, make reference to this brochure and to the documents required by section 718.503, Florida statutes, to be furnished by a developer to a buyer or lessee.

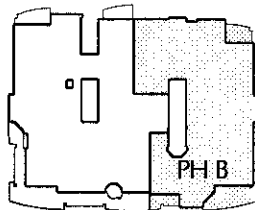




PENTHOUSE B

LEVEL 11
3 BEDROOMS, GRAND SALON, 3 1/2 BATHROOMS

RESIDENCE DATA:
 CONDITIONED AREA 4,385 SF
 TERRACE AREA 616 SF
 TOTAL LIVING AREA 5,001 SF



Level 11 Building Plan

THE
SAVOY
 ON PALM

All sizes, dimensions, specifications and features shown are subject to change in accordance with the agreement for sale. Materials and features used in any model may differ from those to be used in the condominium building and other units. Units are being sold unfurnished. Any depiction of furniture, furnishing, etc. shown is solely for visual effect, and such items are not being provided by the developer. Renderings and illustrations are artists' conceptions only and may vary as final designs are completed and construction progresses. Oral representations cannot be relied upon as correctly stating representations of the developer. For correct representations, make reference to this brochure and to the documents required by section 718.503, Florida statutes, to be furnished by a developer to a buyer or lessee.



EQUAL HOUSING OPPORTUNITY